

[Home](#)
[About us](#)
[Products](#)
[Custom engineering](#)
[News](#)
[Contacts](#)

The Owl-360 infrared vision system

QOS manufactures sensor systems for surveillance and security activities. Day or night and always up-to-date, they provide the information needed for decision making. Their modular design permits deployment on mobile (vehicles) and stationary (mast systems) platforms to protect critical infrastructure such as airfields, harbors, oil/gas/energy stations and convention centers. Upon request, these networked systems can be equipped with a variety of sensors and transmission technology. Their interfaces enable easy integration into existing guidance systems.

The Owl-360 infrared vision system comprises a sensor head rotating continuously at 0,5 round/sec for 360° azimuth coverage. The sensor head with a pan-and-tilt head is the key element of the multi-sensor platform. It permits perfect panorama observation and is operated remotely via a control console. Its infrared sensor consists of 2 cooled detectors and 2 CCD cameras which gives 32° vertical view. The top of The Owl-360 is a sapphire hood with mirror scan in it which permits to see in narrow FOV of IR and daylight channels. The time to switch-over the mode of view and finding the interested object is not more than 1 second.

Applications

- ⊕ Security perimeters control
- ⊕ Day and night panoramic surveillance
- ⊕ Coastal and border passive surveillance
- ⊕ Airport traffic monitoring
- ⊕ Detection of intrusion
- ⊕ Early detection of forest fire

Parameters

Turret unit (TU)

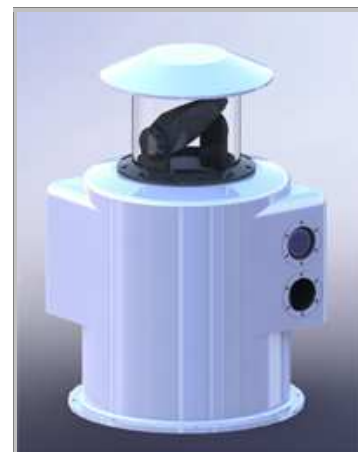
Scanning speed 180°/sec

Thermal imaging channel of TU

Spectral range 3...5μm
 Detector type Cooled InSb or MCT
 Resolution 640x480
 Vertical FOV 32°
 Horizontal FOV 360°
 Detection range for
 Human Up to 2,5km
 Vehicle (car) Up to 5 km

Day light channel

Spectral range 0,4...0,8 μm
 Detector type CCD
 Resolution 1280x720
 Vertical FOV 32°
 Horizontal FOV 360°
 Detection range for
 Human Up to 2,5km
 Vehicle (car) Up to 5 km

[Download specification](#)


Hood scanning unit (HSU)**Thermal imaging channel of HSU**

Spectral range	3...5 μ m
Detector type	Cooled InSb or MCT
Resolution	640x480
FOV	1,4 x 1,7° to 9 x 11°
Identification range for Human	Up to 2,5km
Vehicle (car)	Up to 5 km

Day light channel

Spectral range	0,4...0,8 μ m
Detector type	CCD
Resolution	1280x720
FOV	1,4 x 1,7° to 9 x 11°
Identification range for Human	Up to 2,5km
Vehicle (car)	Up to 5 km

Dimensions and weigh**Dimensions of TU with HSU**

Diameter	407mm
Height	487mm
Diameter of HSU	172mm
Weight of TU with HSU	52kg

*** Status of project: developing work (release date June of 2013)**